

PART OF E. 1/2  
SECTION 29, T.7N., R.1E., S.L.B. & M.

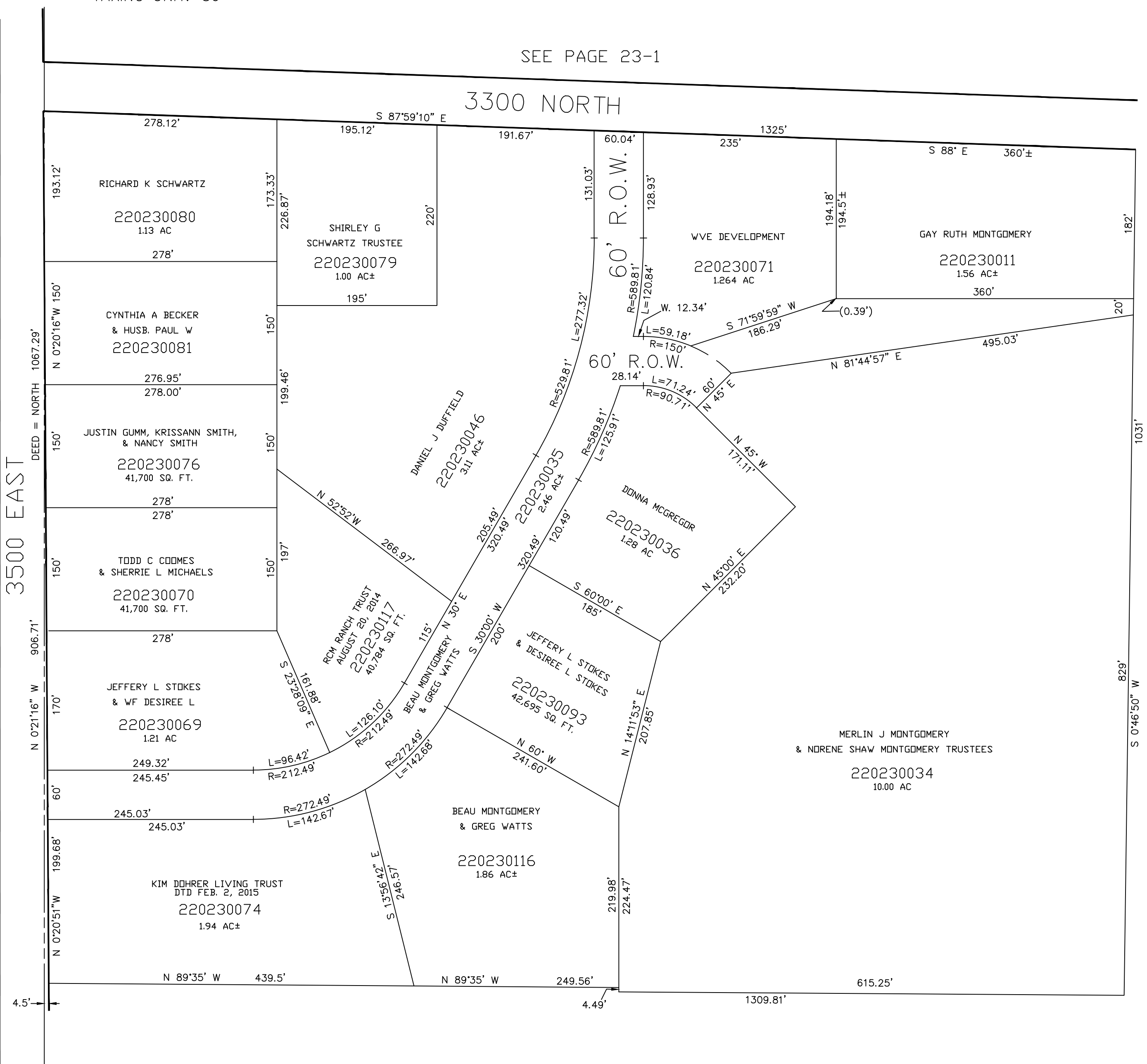
IN WEBER COUNTY  
SCALE 1" = 100'

TAXING UNIT: 36

SEE PAGE 23-1

SEE PAGE 23-6

3500 EAST



SEE PAGE 23-3

SEE PAGE 23-1